




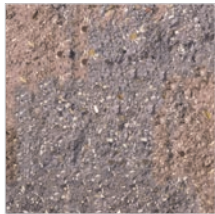
# SIENASTONE®

	Marche éclatée Natural edge step		Marches sciées Saw cut steps	
				
	20 x 48" 500 x 1200 mm	20 x 48" 500 x 1200 mm	20 x 72" 500 x 1800mm	
Épaisseur / Thickness	7 ¼" (185 mm)	7 ¼" (180 mm)	7 ¼" (180 mm)	
Pied linéaire par palette / Lin. feet per bundle	24.00 pi/ft (7.32 m)	24.00 pi/ft (7.32 m)	12.00 pi/ft (3.66 m)	
Poids par palette / Weight per bundle	3455 lb (1567 kg)	3275 lb (1485 kg)	1616 lb (733 kg)	
Unités par palette / Units per bundle	6	6	2	

MESURE DE RÉFÉRENCE EN MÉTRIQUE  
USE METRIC MEASUREMENT FOR REFERENCE

COULEURS / COLORS	CODES		
Acajou / Mahogany	SIEMAR185-ACA	-	-
Beige / Tan	-	SIEMAS180-BEI	SIEMAS18072-BEI
Beige Irlandais / Irish Coast	-	SIEMAS180-BIR	-
Charcoal / Midnight Charcoal	-	SIEMAS180-CHA	SIEMAS18072-CHA
Granit / Granite	SIEMAR185-GRA	SIEMAS180-GRA	SIEMAS18072-GRA
Gris Léger / Light Grey	-	SIEMAS180-GRL	SIEMAS18072-GRL
Gris Trinité / Cliffside Grey	-	SIEMAS180-GRT	-
Naturel / Natural	SIEMAR185-NAT	-	-

## ÉCLATÉ / NATURAL EDGE



Acajou / Mahogany



Granit / Granite



Naturel / Natural

## SCIÉ / SAWCUT



Beige / Tan



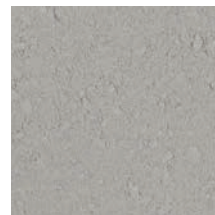
Beige Irlandais /  
Irish Coast



Charcoal /  
Midnight Charcoal



Granit / Granite Blend



Gris Léger / Light Grey



Gris Trinité / Cliffside Grey

# SIENASTONE®

INFORMATIONS LEED / LEED INFORMATION		
Approvisionnement et exploitation / Supply and operation	<ul style="list-style-type: none"> <li>• Approvisionnement en matières premières et exploitation +1 point</li> <li>• Pratiques d'exploitation exemplaires +1 point</li> </ul>	<ul style="list-style-type: none"> <li>• Supply of raw materials and exploitation +1 point</li> <li>• Best operating practices +1 point</li> </ul>
Information des composantes des produits / Information on product components	<ul style="list-style-type: none"> <li>• Rapport sur les composantes des produits +1 point</li> <li>• Optimisation des composantes des produits +1 point</li> </ul>	<ul style="list-style-type: none"> <li>• Report on product components +1 point</li> <li>• Optimization of product components +1 point</li> </ul>
Information environnementale des produits / Environmental product information	<ul style="list-style-type: none"> <li>• Rapport environnementale des produits +1 point</li> </ul>	<ul style="list-style-type: none"> <li>• Environmental report of products +1 point</li> </ul>

